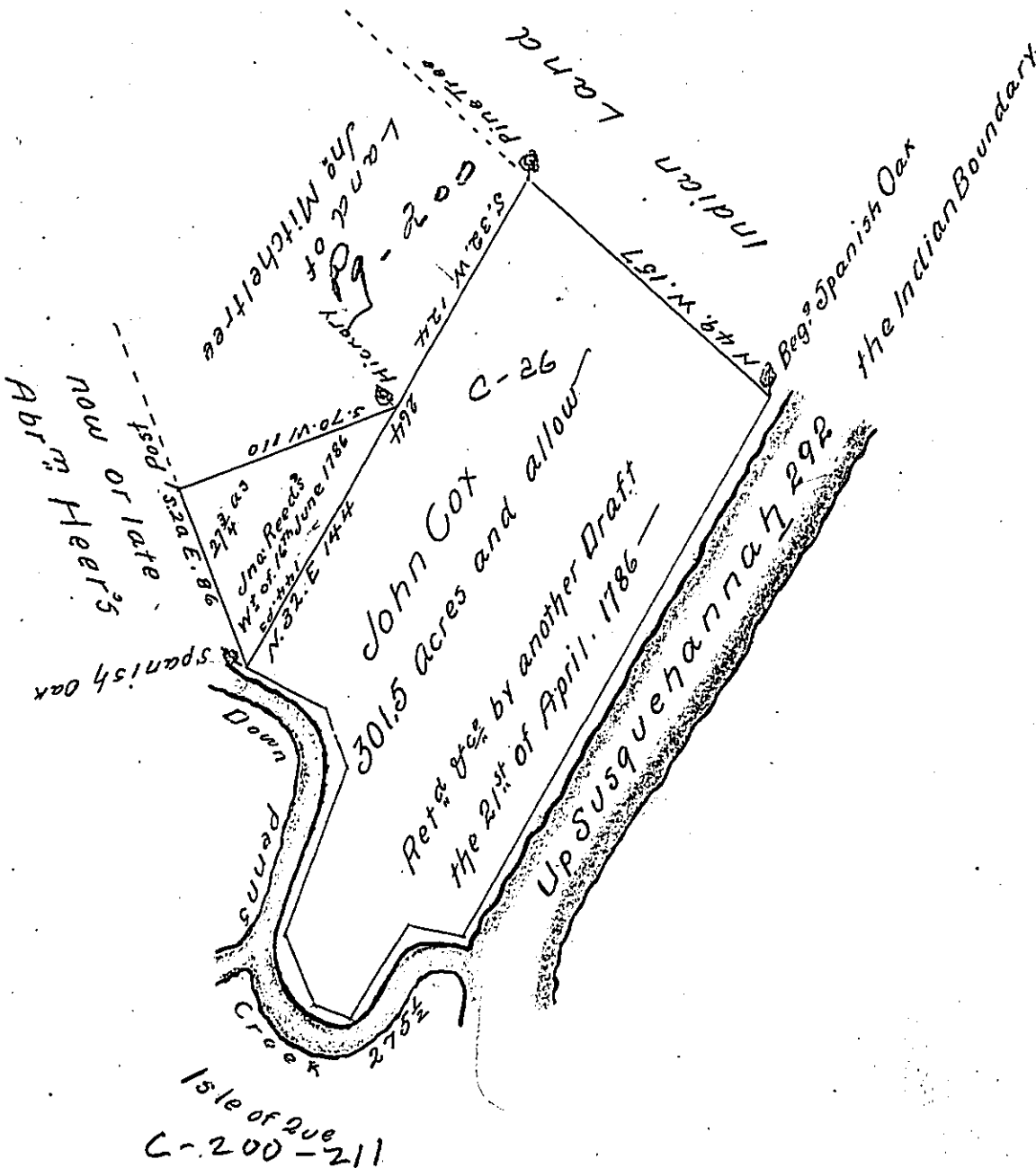


Courses & Distances
Down Penns Creek

S 61 E 43
S 23 E 27
S 20 W 82
S 20 E 33
S 70 E 16½
N 35 E 48
S 81 E 26
275½

Courses and
Distances up
Susquehanna

N 35 E 82
N 32 E 210
292 to
beginning



The Draught of a Tract of Land called _____ situate on
the West side of Susquehanna above and adjoining
to the Mouth of Penns Creek. Containing Three hun-
dred one acres and an half Survey'd the 15th day
of May Anno Dom 1766 In Pursuance of a Warrant from the
Honble Proprietaries to John Cox bearing Date at Philad^a
the 25th Day of February Anno Domi 1763

p Wth Maclay

To John Lukens Esq^r S G
of Pennsylvania

N.B. A Return of this Survey was forwarded to the S G^s office the
10th of February 1773

N.B. the Triangular piece of 27½^a Survey'd on W^t to Jno Reed the 16th June 1786

IN TESTIMONY that the above is a copy of the original remaining on file in
the Department of Internal Affairs of Pennsylvania, made
conformably to an Act of Assembly approved the 16th day of
February, 1833, I have hereunto set my Hand and caused
the Seal of said Department to be affixed at Harrisburg,
this twenty seventh day of April 1904

Isaac R. ...
Secretary of Internal Affairs.